

DESCRIPTION

A solenoid-operated, 2-way, direct-acting, spool-type, normally closed, screw-in, hydraulic cartridge valve designed to operate as a bidirectional blocking valve in low flow circuits.

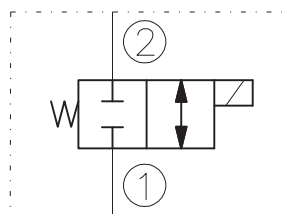
OPERATION

When de-energized, the EV56-2L blocks flow in both directions. When energized, the valve's spool shifts to open the bidirectional flow path.

RATINGS

Operating Pressure: 200bar
 Flow: 10 l/min max.
 Internal Leakage: 82 cc/minute max. at 200bar
 Temperature: -20°C to 90°C with standard Buna N seals
 Coil Duty Rating: Continuous from 85% to 115% of nominal voltage
 Minimum Pull-in Voltage: 85% of nominal at 200bar
 Filtration: Recommended 25µm nominal or better
 Fluids: Mineral-based or synthetics with lubricating properties at viscosities of 7,4 to 420 cSt
 Installation: No restrictions
 Cavity: CC06-2 ; See "CAVITIES AND BODIES" brochure

SYMBOL

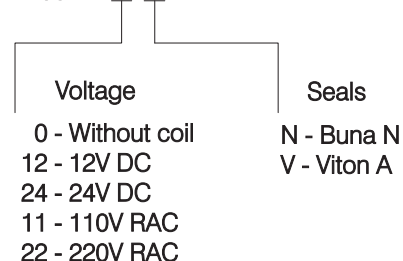


CAVITY

See "CAVITIES AND BODIES" brochure

TO ORDER

EV56-2L



Terminations DIN 43650.
 See "Accessories" brochure

PERFORMANCE (Cartridge Only)

